

BANKOM AGRAR

Animal feed manufacturing plant

Product catalog



PREMIER
SUCCESS OF
BREEDING



BANKOM GROUP, following its most important concept **QUALITY ABOVE ALL** has decided to start with animal feed production and make all its resources even more available for greater number of final users.



Animal feed factory has started production in august of 2014, it has capacity of 25 t/hour of finished product and it's equipped with the most modern facilities for animal feed production. The whole manufacturing process is computerized and automated what guarantee high quality products for all kinds and categories of domestic animals.

Animal feed manufacturing plant is divided in two separated production lines, with two pellet mills and two feed mixers. Manufacturing process finishes with automated packing line, with packages of 10kg, 20kg, 40kg and with system for balk cargo.



Factory has its own chemical laboratory where qualified and trained staff perform physical-chemical, microbiological and myco-toxicological testing of raw materials and final products.

Proper and efficient storage of raw materials is of particular importance. Silo of capacity 100.000t is equipped with modern equipment and measuring instruments, what guarantee always to have the best quality raw materials.



From our factory, the market gets a recognizable products like complete and supplement feed mixtures PREMIER and vitamin-mineral mixture BIOVIT VSO.

All our products are fruit of many years of experience of Bankom expert team, which, except using the result of everyday practical activities, follows and implements the latest scientific knowledge.



Bankom agrar plant, for farmers means getting **HIGH QUALITY PRODUCTS** with ongoing monitoring and consulting on matters of health and nutrition, what is essential precondition for the utilization of genetic production potential of animals.

Together with our farmers we perform professional analysis, set goals, monitor and analyze results. With constant monitoring and applying of modern trends, we are constantly working to improve these results.



PREMIER FEED CONCENTRATES - PIGS

COMPLETE FEED



**PREMIER
CONCENTRATES**

PIGLETS

22%

Complete feed for piglets

Ingredients: Grains, products of oil industry, corn milling products, byproducts of grain processing, whey powder, dextrose, mineral nutrients (mono calcium phosphate, CaCO₃, salt for animal use), vitamin-mineral premix, flavor, benzoic acid, a synthetic amino acid, antioxidant (E320, E321), enzymes.

Chemical composition:

Protein, min.....22.00 %	Ash, max.....8.00 %	ME content, min.....13.50 MJ/kg
Moisture, max.... 12.00 %	Calcium..... 0.80 to 1.00 %	Lysine, min.....1.30 %
Fats, min.....7.00 %	Phosphorus, min.....0.65 %	Methionine+cystine, min...0.75 %
Cellulose, max.....4.00 %	Sodium.....0.15 to 0.25 %	

Feeding instructions: The complete feed is used for feeding suckling piglets. Provide feed free-choice to piglets. Always provide fresh, clean water.



**PREMIER
CONCENTRATES**

PIGLETS

20%

Complete feed for piglets - I

up to 15 kg of weight

Ingredients: Grains, products of oil industry, corn milling products, byproducts of grain processing, whey powder, dextrose, mineral nutrients (mono calcium phosphate, CaCO₃, salt for animal use), vitamin-mineral premix, flavor, benzoic acid, a synthetic amino acid, antioxidant (E320, E321), enzymes.

Chemical composition:

Protein, min.....20.00 %	Ash, max.....8.00 %	ME content, min.....13.00 MJ/kg
Moisture, max.... 12.00 %	Calcium..... 0.80 to 1.00 %	Lysine, min.....1.20 %
Fats, min.....5.00 %	Phosphorus, min.....0.60 %	Methionine+cystine, min...0.70 %
Cellulose, max.....5.00 %	Sodium.....0.15 to 0.25 %	

Feeding instructions: The complete feed is used for feeding piglets up to 15 kg of weight. Provide feed free-choice to piglets. Always provide fresh, clean water.



**PREMIER
CONCENTRATES**

PIGLETS

18%

Complete feed for piglets - II

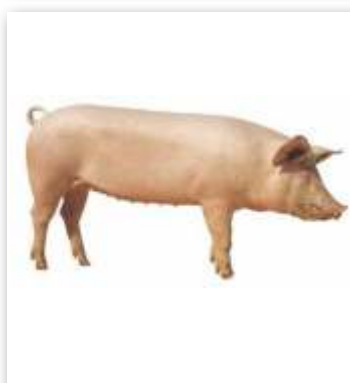
from 15 kg to 25 kg of weight

Ingredients: Grains, products of oil industry, corn milling products, byproducts of grains processing, mineral nutrients (mono calcium phosphate, CaCO₃, salt for animal use), vitamin-mineral premix, flavor, benzoic acid, a synthetic amino acids, antioxidant (E320, E321), enzymes.

Chemical composition:

Protein, min.....18.00 %	Calcium..... 0.70 to 0.90 %	ME content, min.....13.00 MJ/kg
Moisture, max.... 13.50 %	Phosphorus, min.....0.60 %	Lysine, min.....1.00 %
Cellulose, max.... 6.00 %	Sodium.....0.15 to 0.25 %	Methionine+cystine, min...0.60 %
Ash, max.....8.00 %		

Feeding instructions: The complete feed is used for feeding piglets from 15 kg to 25 kg of weight. Provide feed free-choice to piglets. Always provide fresh, clean water.



**PREMIER
CONCENTRATES**

**FATTENING
PIGS**

16%

Complete feed for fattening pigs in growth - I

from 25 kg to 60 kg of weight

Ingredients: Grains, products of oil industry, corn milling products, starch industry products, products of sugar industry, mineral nutrients (mono calcium phosphate, CaCO₃, salt for animal use), vitamin-mineral premix, flavor, benzoic acid, a synthetic amino acids, antioxidant (E320, E321), enzymes.

Chemical composition:

Protein, min.....16.00 %	Calcium..... 0.60 to 0.80 %	ME content, min.....12.50 MJ/kg
Moisture, max.... 13.50 %	Phosphorus, min.....0.55 %	Lysine, min.....0.80 %
Cellulose, max.... 7.00 %	Sodium.....0.15 to 0.25 %	Methionine+cystine, min...0.45 %
Ash, max.....8.00 %		

Feeding instructions: The complete feed is used for feeding fattening pigs in growth-I from 25 kg to 60 kg of weight. Provide feed free-choice to animal. Always provide fresh, clean water.



**PREMIER
CONCENTRATES**

**FATTENING
PIGS**

14%

Complete feed for fattening pigs in growth - II

from 60 kg to 100 kg of weight

Ingredients: Grains, products of oil industry, corn milling products, starch industry products, products of sugar industry, mineral nutrients (mono calcium phosphate, CaCO₃, salt for animal use), vitamin-mineral premix, flavor, benzoic acid, a synthetic amino acids, antioxidant (E320, E321), enzymes.

Chemical composition:

Protein, min.....14.00 %	Calcium..... 0.50 to 0.70 %	ME content, min.....12.50 MJ/kg
Moisture, max.....13.50 %	Phosphorus, min.....0.50 %	Lysine, min.....0.65 %
Cellulose, max..... 7.00 %	Sodium.....0.15 to 0.25 %	Methionine+cystine, min...0.40 %
Ash, max.....8.00 %		

Feeding instructions: The complete feed is used for feeding fattening pigs-II in growth from 60 kg to 100 kg of weight. Provide feed free-choice to animal. Always provide fresh, clean water.



**PREMIER
CONCENTRATES**

**FATTENING
PIGS**

12%

Complete feed for fattening pigs in growth - III
over 100kg of weight

Ingredients: Grains, products of oil industry, corn milling products, starch industry products, products of sugar industry, mineral nutrients (mono calcium phosphate, CaCO₃ salt for animal use), vitamin-mineral premix, flavor, benzoic acid, a synthetic amino acids, antioxidant (E320, E321), enzymes.

Chemical composition:

Protein, min.....12.00 %	Calcium..... 0.40 to 0.60 %	ME content, min.....12.00 MJ/kg
Moisture, max.....13.50 %	Phosphorus, min.....0.45 %	Lysine, min.....0.60 %
Cellulose, max..... 7.00 %	Sodium.....0.15 to 0.25 %	Methionine+cystine, min...0.35 %
Ash, max.....8.00 %		

Feeding instructions: The complete feed is used for feeding fattening pigs-III for over 100 kg of weight. Provide feed free-choice to animal. Always provide fresh, clean water.



**PREMIER
CONCENTRATES**

**BOARS AND
LACTATING SOWS**

16%

Complete feed for boars and lactating sows

Ingredients: Grains, products of oil industry, corn milling products, starch industry products, products of sugar industry, byproducts of grains processing, mineral nutrients (mono calcium phosphate, CaCO₃, salt for animal use), vitamin-mineral premix, synthetic amino acids, antioxidant (E320, E321), enzymes.

Chemical composition:

Protein, min.....16.00 %	Calcium..... 0.75 to 1.00 %	ME content, min.....13.00 MJ/kg
Moisture, max.....13.50 %	Phosphorus, min.....0.55 %	Lysine, min.....0.75 %
Cellulose, max..... 7.00 %	Sodium.....0.15 to 0.25 %	Methionine+cystine, min...0.40 %
Ash, max.....8.00 %		

Feeding instructions: The complete feed is used for feeding boars and lactating sows. Provide feed free-choice to animal. Always provide fresh, clean water.

SUPPLEMENT FEED - SUPERS



**PREMIER
SUPER**

**PIGLET
40%**

Supplement feed for piglets

Ingredients: Products of oil industry, byproducts of grains processing, corn milling products, mineral nutrients (mono calcium phosphate, CaCO₃, salt for animal use), vitamin-mineral premix, flavor, synthetic amino acids, antioxidant (E320, E321), enzymes.

Chemical composition:

Protein, min.....40.00 %	Calcium.... 2.00 to 2.70 %	Lysine,min.....3.30 %
Moisture, max.....12 %	Phosphorus, min.....1.80 %	Methionine+cystine, min.....1.70 %
Ash, max.....15.00 %	Sodium.....0.50 to 0.70 %	

Feeding instructions: Supplement feed is used for making complete feed for piglets, mixing it with grains.

Complete feed making	Piglets up to 15kg of weight	Piglets from 15kg to 25kg
Super	35	31
Corn	65	69



**PREMIER
SUPER**

**FATTENING
PIGS**

35%

Supplement feed for fattening pigs

Ingredients: Products of oil industry, byproducts of grain processing, corn milling products, mineral nutrients (mono calcium phosphate, CaCO₃, salt for animal use), vitamin-mineral premix, flavor, a synthetic amino acids, antioxidant (E320, E321), enzymes.

Chemical composition:

Protein, min.....35.00 %	Calcium.... 2.20 to 2.70 %	Lysine,min.....2.00 %
Moisture, max.....12 %	Phosphorus, min.....1.50 %	Methionine+cystine, min.....1.00 %
Ash, max.....15.00 %	Sodium.....0.50 to 0.70 %	

Feeding instructions: Supplement feed is used for making complete feed for fattening pigs, by mixing it with grains.

Complete feed making	From 25 kg to 60 kg	From 60kg to the end of fattening
Super	30	23
Corn	70	77



PREMIER CONCENTRATE - POULTRY: COMPLETE FEED



**PREMIER
CONCENTRATE**

**FATTENING
CHICKENS I**

22%

Complete feed for chicken in fattening I

Ingredients: Grains, products of oil industry, corn milling products, byproducts of grain processing, mineral nutrients (monocalcium phosphate, CaCO₃, salt for animal use, sodium bicarbonate), vitamin-mineral premixes, flavors, synthetic amino acids, coccidiostatic, magnesium oxide, enzymes, antioxidant (E320, E321).

Chemical composition:

Protein, min.....	22.00 %	Calcium.....	0.90 to 1.10 %	Sodium.....	0.15 to 0.20 %
Fats, min.....	5.00 %	Phosphorus...	0.65 to 0.85 %	ME content, min.....	13.0 MJ/kg
Moisture max...	13.50 %	Phosphorus		Lysine min.....	1.15 %
Cellulose, max...	5.00 %	usable, min.....	0.40 %	Methionine+cystine, min...	0.85 %
Ash, max.....	8.00 %				

Feeding instructions: A complete feed for chickens in fattening from day 1 to 21 st day of growth. Provide feed free-choice to animal. Always provide fresh water. This mixture contains coccidiostatic and its forbidden the use of it 1 day prior to slaughter. This supplement contains some ionophores: simultaneous use of similar medical substances (tiamulin) can be contraindicated. This mixture is dangerous for equidae.



**PREMIER
CONCENTRATE**

**FATTENING
CHICKENS II**

19%

Complete feed for chicken in fattening II

Ingredients: Grains, products of oil industry, corn milling products, byproducts of grain processing, mineral nutrients (monocalcium phosphate, CaCO₃, salt for animal use, sodium bicarbonate), vitamin-mineral premixes, flavors, synthetic amino acids, coccidiostatic, magnesium oxide, enzymes, antioxidant (E320, E321).

Chemical composition:

Protein, min.....	19.00 %	Calcium.....	0.80 to 1.00 %	Sodium.....	0.15 to 0.20 %
Fats, min.....	5.00 %	Phosphorus...	0.60 to 0.80 %	ME content, min.....	13.0 MJ/kg
Moisture max...	13.50 %	Phosphorus		Lysine, min.....	0.90 %
Cellulose, max...	5.00 %	usable, min.....	0.35 %	Methionine+cystine, min...	0.70 %
Ash, max.....	8.00 %				

Feeding instructions: A complete feed for chickens in fattening from 22 nd to 35 th day of growth. Provide feed free-choice to animal. Always provide fresh water This mixture contains coccidiostatic and its forbidden the use of it 1 day prior to slaughter. This supplement contains some ionophore: simultaneous use of similar medical substances (tiamulin) can be contraindicated. This mixture is dangerous for equidae.



**PREMIER
CONCENTRATE**

**FATTENING
CHICKENS III**

17%

Complete feed for chicken in fattening III

Ingredients: Grains, products of oil industry, corn milling products, byproducts of grain processing, mineral nutrients (monocalcium phosphate, CaCO₃, salt for animal use, sodium bicarbonate), vitamin-mineral premixes, flavors, synthetic amino acids, magnesium oxide, enzymes, antioxidant (E320, E321).

Chemical composition:

Protein, min.....	17.00 %	Calcium.....	0.70 do 0.90 %	Sodium.....	0.15 do 0.20 %
Moisture,max....	13.50 %	Phosphorus..	0.50 do 0.70%	ME content, min....	13.00 MJ/kg
Cellulose, max...	6.00 %	Phosphorus			
Ash, max.....	8.00 %	usable, min.....	0.30 %		

Feeding instructions: A complete feed for chickens from 36 day to the end of fattening. Provide feed free-choice to animal. Always provide fresh water.



PREMIER CONCENTRATE

LAYING
HENS

16,5%

Complete feed for hens—layers of consuming eggs I

Ingredients: Grains, products of oil industry, corn milling products, byproducts of grains processing, starch industry products, mineral nutrients (monocalcium phosphate, CaCO₃, salt for animal use, sodium bicarbonate), vitamin-mineral premixes, flavors, synthetic amino acids, magnesium oxide, enzymes, antioxidant (E320, E321), carophyll.

Chemical composition:

Protein, min..... 16.50 %	Phosphorus.....0.65 do 0.85%	ME content, min.....11.50 MJ/kg
Moisture,max.....13.50 %	Phosphorus	Lysine, min.....0.75 %
Cellulose, max... 8.00 %	usable, min.....0.35 %	Methionine+cystine, min...0.65 %
Ash, max..... 13.00 %	Sodium.....0.15 to 0.20 %	Linoleic acid, min.....1.00 %
Calcium ..3.20 to 4.00 %		

Feeding instructions: A complete feed for hens layers of consuming eggs from 18th to 52nd week. To be given in amount of 115-125 g/per hen/per day. Always provide fresh water.



PREMIER CONCENTRATE

LAYING
HENS

15%

Complete feed for hens—layers of consuming eggs II

Ingredients: Grains, products of oil industry, corn milling products, byproducts of grains processing, starch industry products, mineral nutrients (monocalcium phosphate, CaCO₃, salt for animal use, sodium bicarbonate), vitamin-mineral premixes, flavors, synthetic amino acids, magnesium oxide, enzymes, antioxidant (E320, E321), carophyll.

Chemical composition:

Protein, min..... 15.50 %	Phosphorus.....0.60 do 0.80%	ME content, min.....11.50 MJ/kg
Moisture,max.....13.50 %	Phosphorus	Lysine, min.....0.70 %
Cellulose, max... 8.00 %	usable, min.....0.30 %	Methionine+cystine, min...0.60 %
Ash, max..... 13.00 %	Sodium.....0.15 to 0.20 %	Linoleic acid, min.....0.90 %
Calcium...3.20 to 4.00 %		

Feeding instructions: A complete feed for hens layers of consuming eggs from 52nd week to the end. To be given in amount of 115-125 g/per hen/per day. Always provide fresh water.



PREMIER CONCENTRATE PELLETED

TURKEY

28%

Complete feed for growing fattening turkey I

Ingredients: Grains, products of oil industry, corn milling products, byproducts of grain processing, mineral nutrients (monocalcium phosphate, CaCO₃, salt for animal use, sodium bicarbonate), vitamin-mineral premixes, flavors, synthetic amino acids, coccidiostatic, enzymes, antioxidant (E320, E321).

Chemical composition:

Protein, min..... 28.00 %	Phosphorus.....0.90 do 1.10%	ME content, min.....11.80 MJ/kg
Moisture,max.....13.00 %	Phosphorus	Lysine, min.....1.70 %
Cellulose, max... 5.00 %	usable, min.....0.70 %	Methionine+cystine, min...1.00 %
Ash, max..... 9.00 %	Sodium.....0.15 to 0.20 %	Linoleic acid, min.....1.00 %
Calcium...1.20 to 1.40 %		

Feeding instructions: A complete feed for turkey fattening up to 4 week. Provide feed free-choice to animal. Always provide fresh, clean water. This mixture contains coccidiostatic and its forbidden the use of it 5 day prior to slaughter. This supplement contains some ionophore: simultaneous use of similar medical substances can be contraindicated.



PREMIER CONCENTRATE PELLETED

TURKEY

24%

Complete feed for growing fattening turkey II

Ingredients: Grains, products of oil industry, corn milling products, byproducts of grain processing, mineral nutrients (monocalcium phosphate, CaCO₃, salt for animal use, sodium bicarbonate), vitamin-mineral premixes, flavors, synthetic amino acids, coccidiostatic, enzymes, antioxidant (E320, E321).

Chemical composition:

Protein, min..... 24.00 %	Phosphorus.....0.80 do 1.00%	ME content, min.....12.10 MJ/kg
Moisture,max.....13.00 %	Phosphorus	Lysine, min.....1.40 %
Cellulose, max... 5.00 %	usable, min.....0.62 %	Methionine+cystine, min...0.90 %
Ash, max..... 9.00 %	Sodium.....0.15 to 0.20 %	Linoleic acid, min.....1.00 %
Calcium...1.10 to 1.30 %		

Feeding instructions: A complete feed for fattening turkey from 5th to 8th week. Provide feed free-choice to animal. Always provide fresh, clean water. This mixture contains coccidiostatic and its forbidden the use of it 5 day prior to slaughter. This supplement contains some ionophore: simultaneous use of similar medical substances can be contraindicated.



PREMIER CONCENTRATE PELLETED

TURKEY

20%

Complete feed for growing fattening turkey III

Ingredients: Grains, products of oil industry, corn milling products, byproducts of grain processing, mineral nutrients (monocalcium phosphate, CaCO₃, salt for animal use, sodium bicarbonate), vitamin-mineral premixes, flavors, synthetic amino acids, enzymes, antioxidant (E320, E321).

Chemical composition:

Protein, min..... 20.00 %	Phosphorus.....0.70 do 0.90%	ME content, min.....12.50 MJ/kg
Moisture,max.....13.00 %	Phosphorus	Lysine, min.....1.10 %
Cellulose, max... 6.00 %	usable, min.....0.55 %	Methionine+cystine, min...0.85 %
Ash, max..... 9.00 %	Sodium.....0.15 to 0.20 %	Linoleic acid, min.....1.00 %
Calcium...1.00 to 1.20 %		

Feeding instructions: A complete feed for fattening turkey from 9th to 12th week. Provide feed free-choice to animal. Always provide fresh, clean water.



**PREMIER
CONCENTRATE
PELLETED**

**TURKEY
16%**

Complete feed for growing fattening turkey IV

Ingredients: Grains, products of oil industry, corn milling products, byproducts of grain processing, mineral nutrients (monocalcium phosphate, CaCO₃, salt for animal use, sodium bicarbonate), vitamin-mineral premixes, flavors, synthetic amino acids, enzymes, antioxidant (E320, E321).

Chemical composition:

Protein, min.....16.00 % Phosphorus.....0.55 do 0.75% ME content, min.....12.80 MJ/kg
 Moisture,max.....13.50 % Phosphorus Lysine, min.....0.60 %
 Cellulose, max....6.00 % usable, min.....0.40 % Methionine+cystine, min..0.60 %
 Ash, max.....9.00 % Sodium.....0.15 to 0.20 % Linoleic acid, min.....1.00 %
 Calcium...0.90 to 1.10 %

Feeding instructions: A complete feed for fattening turkey from 13th week. Provide feed free-choice to animal. Always provide fresh, clean water.

SUPPLEMENT FEED – SUPERS



**PREMIER
SUPER**

**CHICKEN
FATTENING
40%**

Supplement feed for fattening chicken

Ingredients: Products of oil industry, corn milling products, byproducts of grains processing, mineral nutrients (mono calcium phosphate, CaCO₃, salt for animal use), vitamin- mineral premix, flavor, a synthetic amino acids, antioxidant (E320, E321), magnesium oxide, enzymes.

Chemical composition:

Protein, min.....40.00 % Calcium.....2.80 to 3.00 % Sodium.....0.45 to 0.70 %
 Moisture,max.....13.00 % Phosphorus.....1.70 do 1.90% Lysine, min.....2.50 %
 Cellulose, max....8.00 % Phosphorus Methionine+cystine, min..1.50 %
 Ash, max.....16.00 % usable, min.....1.00 %

Feeding instructions: Supplement feed is used for making complete feed for fattening chicken from 1st to 42nd day of growing, by mixing it with corn.

Complete feed making	From 1 st to 28 th day	From 22 nd to 42 nd day
Super	44	35
Corn	56	65



**PREMIER
SUPER**

**LAYING
HENS
30%**

Supplement feed for hens layers of consuming eggs

Ingredients: Products of oil industry, byproducts of grains processing, corn milling products, mineral nutrients (mono calcium phosphate, CaCO₃, salt for animal use), vitamin-mineral premix, flavor, a synthetic amino acids, antioxidant (E320, E321), magnesium oxide, enzymes, carophyll.

Chemical composition:

Protein, min.....30.00 % Calcium.....8.00 to 10.00 % Sodium.....0.45 to 0.60 %
 Moisture,max.....13.00 % Phosphorus.....1.80 to 2.00% Lysine, min.....1.60 %
 Cellulose, max....10.00 % Phosphorus Methionine+cystine,min..1.10 %
 Ash, max.....30.00 % usable, min.....1.00 % Linoleic acid.....2.50%

Feeding instructions: Supplement feed is used for making complete feed for feeding of laying hens for consuming eggs, by mixing it with corn.

Complete feed making	From 1 st to 52 nd	From 22 nd to 42 nd day
Super	39	32
Corn	61	68



BANKOM
GROUP



PREMIER CONCENTRATES—RUMINANTS: COMPLETE FEED



**PREMIER
CONCENTRATE**

**CALVES
18%**

Complete feed for calves – II

from 50 kg to 100 kg of weight

Ingredients: Grains, products of oil industry, corn milling products, starch industry products, byproducts of grain processing, mineral nutrients (monocalcium phosphate, CaCO₃, salt for animal use, sodium bicarbonate), vitamin-mineral premixes, flavors, antioxidant (E320, E321).

Chemical composition:

Protein, min.....18.00 %	Cellulose, max.....8.00 %	Phosphorus.....0.40 to 0.60 %
Fats, min.....5.00%	Ash, max.....8.00 %	Sodium..... 0.20 to 0.30 %
Moisture, max..... 13.00 %	Calcium.....0.60 to 0.80 %	Oats content/kg, min.....0.90 %

Feeding instructions: A complete feed for calves feeding from 50kg to 100 kg of weight. To be given in dry state. Always provide fresh water.



**PREMIER
CONCENTRATE**

**CALVES
16%**

Complete feed for growing and fattening calves – III

from 100 kg to 250 kg

Ingredients: Grains, products of oil industry, corn milling products, starch industry products, mineral nutrients (monocalcium phosphate, CaCO₃, salt for animal use, vitamin-mineral premixes, flavors, antioxidant (E320, E321).

Chemical composition:

Protein, min.....16.00 %	Cellulose, max.....12.00 %	Phosphorus.....0.50 to 0.70 %
Moisture, max.....13.50 %	Ash, max.....10.00 %	Sodium.....0.20 to 0.30 %
NPN protein content in proteins total, max.....20.00 %	Calcium.....0.80 to 1.00 %	Oats content/kg, min.....0.95 %

Feeding instructions: A complete feed for fattening calves from 100kg to 250 kg of weight. To be given in dry state. Always provide fresh water.



**PREMIER
CONCENTRATE**

**FATTENING
BULLOCKS
14%**

Complete feed for fattening bullocks – I

from 250 kg to 350 kg

Ingredients: Grains, products of oil industry, corn milling products, starch industry products, mineral nutrients (monocalcium phosphate, CaCO₃, salt for animal use), vitamin-mineral premixes, flavor, antioxidant (E320, E321).

Chemical composition:

Protein, min.....14.00 %	Cellulose, max.....15.00 %	Phosphorus.....0.40 to 0.60 %
Moisture, max.....13.50 %	Ash, max.....10.00 %	Sodium.....0.20 to 0.30 %
NPN protein content in proteins total, max.....35.00 %	Calcium.....0.60 to 0.80 %	Oats content/kg, min.....1.00 %

Feeding instructions: A complete feed for fattening bullocks from 250kg to 350 kg of weight. To be given in dry state. Always provide fresh water.



**PREMIER
CONCENTRATE**

**FATTENING
BULLOCKS**

12%

Complete feed for fattening bullocks – II

over 350 kg of weight

Ingredients: Grains, products of oil industry, corn milling products, starch industry products, mineral nutrients (monocalcium phosphate, CaCO₃, salt for animal use), vitamin-mineral premixes, flavor, antioxidant (E320, E321).

Chemical composition:

Protein, min.....12.00 %	Cellulose, max.....10.00 %	Phosphorus.....0.60 to 0.80 %
Moisture, max.....13.50 %	Ash, max.....10.00 %	Sodium.....0.20 to 0.30 %
NPN protein content in proteins total, max.....25.00 %	Calcium.....0.90 to 1.10 %	Oats content/kg, min.....0.90 %

Feeding instructions: A complete feed for feeding of fattening bullocks over 350 kg of weight. To be given in dry state. Always provide fresh water.



**PREMIER
CONCENTRATE**

COWS

18%

Complete feed for milking cows

over 20l/per day of milk

Ingredients: Grains, products of oil industry, corn milling products, starch industry products, byproducts of grain processing, mineral nutrients (monocalcium phosphate, CaCO₃, salt for animal use), vitamin-mineral premixes, flavor, antioxidant (E320, E321).

Chemical composition:

Protein, min.....18.00 %	Cellulose, max.....10.00 %	Phosphorus.....0.60 to 0.80 %
Moisture, max.....13.50 %	Ash, max.....10.00 %	Sodium.....0.20 to 0.30 %
NPN protein content in proteins total, max.....20.00 %	Calcium.....0.90 to 1.10 %	Oats content/kg, min.....0.80 %

Feeding instructions: A complete feed used for feeding of milking cows with milk production of over 20l per day of milk. To be used with voluminous parts of meal. Always provide fresh water.



**PREMIER
CONCENTRATE**

COWS

15%

Complete feed for milking cows

up to 20l/per day of milk

Ingredients: Grains, products of oil industry, corn milling products, starch industry products, byproducts of grain processing, mineral nutrients (monocalcium phosphate, CaCO₃, salt for animal use), vitamin-mineral premixes, flavor, antioxidant (E320, E321).

Chemical composition:

Protein, min.....15.00 %	Cellulose, max.....10.00 %	Phosphorus.....0.60 to 0.80 %
Moisture, max.....13.50 %	Ash, max.....10.00 %	Sodium.....0.20 to 0.30 %
NPN protein content in proteins total, max.....20.00 %	Calcium.....0.90 to 1.10 %	Oats content/kg, min.....0.90 %

Feeding instructions: A complete feed for milking cows with milk production of up to 20l per day of milk. To be used with voluminous part of meal. Always provide fresh water.



**PREMIER
CONCENTRATE**

COWS

12%

Complete feed for milking cows

Ingredients: Grains, products of oil industry, corn milling products, starch industry products, mineral nutrients (monocalcium phosphate, CaCO₃, salt for animal use), vitamin-mineral premixes, flavor, antioxidant (E320, E321).

Chemical composition:

Protein, min.....12.00 %	Cellulose, max.....10.00 %	Phosphorus.....0.60 to 0.80 %
Moisture, max.....13.50 %	Ash, max.....10.00 %	Sodium.....0.20 to 0.30 %
NPN protein content in proteins total, max.....20.00 %	Calcium.....0.90 to 1.10 %	Oats content/kg, min.....0.90 %

Feeding instructions: A complete feed for milking cows feeding with milk production of up to 15l per day of milk. To be used with voluminous part of meal. Always provide fresh water.



**PREMIER
CONCENTRATE**

LAMBS

18%

Complete feed for growing and fattening lambs – I

up to 15kg

Ingredients: Grains, products of oil industry, corn milling products, starch industry products, byproducts of grain processing, mineral nutrients (monocalcium phosphate, CaCO₃, salt for animal use), vitamin-mineral premixes, flavor, antioxidant (E320, E321).

Chemical composition:

Protein, min.....12.00 %	Cellulose, max.....6.00 %	Phosphorus.....0.50 to 0.70 %
Moisture, max.....13.00 %	Ash, max.....8.00 %	Sodium.....0.30 to 0.40 %
NPN protein content in proteins total, max.....0.00 %	Calcium.....0.80 to 1.00 %	Oats content/kg, min.....0.90 %

Feeding instructions: A complete feed for growing and fattening lambs feeding with up to 15kg of weight. To be used as initial mixture in lambs feeding. Always provide fresh water.



**PREMIER
CONCENTRATE**

**LAMBS
16%**

Complete feed for growing and fattening lambs – II

from 15kg to 35kg of weight
 Ingredients: Grains, products of oil industry, corn milling products, starch industry products, byproducts of grain processing, mineral nutrients (monocalcium phosphate, CaCO₃, salt for animal use), vitamin-mineral premixes, flavor, antioxidant (E320, E321).

Chemical composition:
 Protein, min.....16.00 % Cellulose, max.....8.00 % Phosphorus.....0.50 to 0.70 %
 Moisture, max.....13.50 % Ash, max.....8.00 % Sodium.....0.20 to 0.30 %
 NPN protein content in Calcium.....0.80 to 1.00 % Oats content/kg, min.....0.90 %
 proteins total, max.....15.00 %

Feeding instructions: A complete feed for growing and fattening lambs feeding from 15 kg to 35kg of weight. To be used in dry condition. Always provide fresh water.



**PREMIER
CONCENTRATE**

**LAMB IN SHEEP
AND HOGGET
14%**

Complete feed for lamb in sheep and hogget

Ingredients: Grains, products of oil industry, corn milling products, starch industry products, byproducts of grain processing, mineral nutrients (monocalcium phosphate, CaCO₃, salt for animal use), vitamin-mineral premixes, flavor, antioxidant (E320, E321).

Chemical composition:
 Protein, min.....14.00 % Cellulose, max.....15.00 % Phosphorus.....0.50 to 0.80 %
 Moisture, max.....13.50 % Ash, max.....10.00 % Sodium.....0.20 to 0.40 %
 NPN protein content in Calcium.....0.80 to 1.00 % Oats content/kg, min.....0.95 %
 proteins total, max.....25.00 %

Feeding instructions: A complete feed for lamb in sheep and hogget feeding. To be used with normal voluminous meal. Always provide fresh water.



**PREMIER
CONCENTRATE**

**SHEEPS
16%**

Complete feed for sheep in lactation

Ingredients: Grains, products of oil industry, corn milling products, starch industry products, byproducts of grain processing, mineral nutrients (monocalcium phosphate, CaCO₃, salt for animal use), vitamin-mineral premixes, flavor, antioxidant (E320, E321).

Chemical composition:
 Protein, min.....16.00 % Cellulose, max.....15.00 % Phosphorus.....0.50 to 0.80 %
 Moisture, max.....13.50 % Ash, max.....8.00 % Sodium.....0.20 to 0.40 %
 NPN protein content in Calcium.....0.80 to 1.00 % Oats content/kg, min.....0.95 %
 proteins total, max.....25.00 %

Feeding instructions: A complete feed for sheep in lactation feeding. To be used with normal voluminous parts of meal. Always provide fresh water.



**PREMIER
SUPER**

**FATTENING
BULLOCKS
30%**

Supplement feed for fattening bullocks

Ingredients: Products of oil industry, byproducts of grains processing, corn milling products, mineral nutrients (mono calcium phosphate, CaCO₃, salt for animal use), vitamin-mineral premix, flavor, antioxidant (E320, E321).

Chemical composition:
 Protein, min.....30.00 % Moisture, max.....12.00 % Calcium.....3.00 to 3.60 %
 NPN protein content in Cellulose, max.....10.00 % Phosphorus...2.00 to 2.60 %
 proteins total, max.....30.00 % Ash, max.....14.00 % Sodium.....0.80 to 1.10 %

Feeding instructions: Supplement feed used for making complete feed for fattening bullocks, by mixing it with corn.

Complete feed making	Fattening bullocks from 250kg to 350kg of weight	Fattening bullocks over 350kg of weight
Super	28	19
Corn	72	81



**PREMIER
SUPER**

**COWS
30%**

Supplement feed for milking cows

Ingredients: Products of oil industry, other products, corn milling products, byproducts of grain processing, mineral nutrients (mono calcium phosphate, CaCO₃, salt for animal use), vitamin-mineral premix, flavor, antioxidant (E320, E321).

Chemical composition:
 Protein, min.....30.00 % Moisture, max.....12.00 % Calcium.....2.70 to 3.40 %
 NPN protein content in Cellulose, max.....10.00 % Phosphorus...1.80 to 2.40 %
 proteins total, max.....25.00 % Ash, max.....14.00 % Sodium.....0.60 to 0.90 %

Feeding instructions: Supplement feed used for making complete feed for milking cows, by mixing it with corn.

Complete feed making	Complete feed for cows, 15% protein	Complete feed for cows, 18% protein
Super	33	43
Corn	67	57



Boulevard Nikola Tesla 30a, 11080, Zemun

www.bankomagrars.rs

www.bankom.rs

office@bankom.rs

Telephone: (+381) (11) 319 00 52

Fax.: (+381) (11) 319 07 70